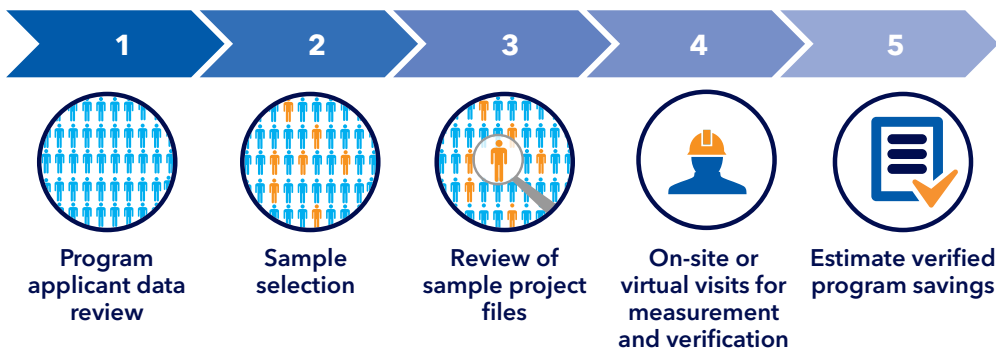


IMPACT EVALUATION OF PY2020 CUSTOM GAS INSTALLATIONS IN RHODE ISLAND

DNV quantified natural gas savings for custom gas projects completed during the 2020 program year (PY). This year's three-year rolling average realization rate is calculated using results from PY2018, PY2019, and PY2020.

APPROACH

Annual sample evaluations: Measurement and verification (M&V) is repeated annually as the previous year's tracking data becomes available. In PY2020, steam trap and non-steam trap sites were evaluated using different methodologies listed below. The overall program realization rate (RR) combines the latest 3-year results. The realization rate is the ratio between evaluated and tracking savings. If RR=100%, then applicant estimated savings were verified and consistent with onsite findings.



Site Evaluation Methodologies

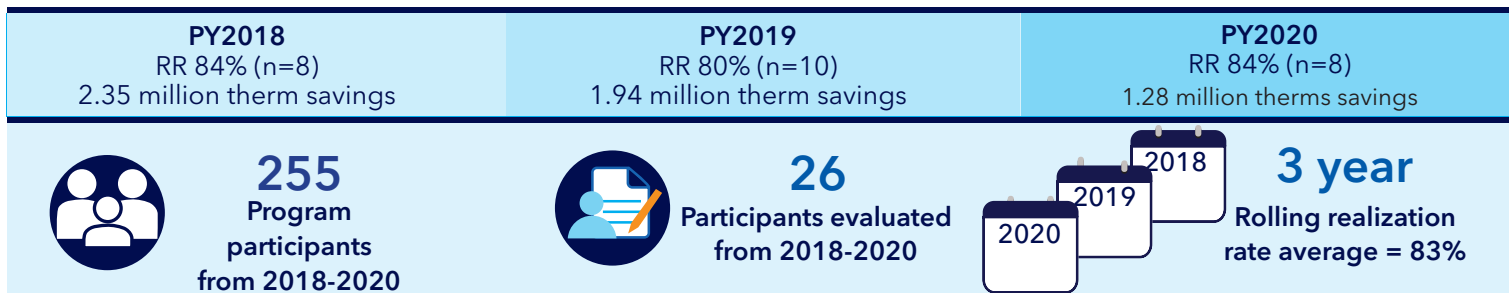
Operational: Ops sites are sites in which an operational adjustment or metered data was used in the evaluation. Operational adjustments include changes to factors such as operating hours, load, or interactive effects. Operational adjustments are supported by metered data.

Non-Operational: Non-ops sites are sites in which an operational adjustment or metered data was not used in the evaluation. Non-operational sites can adjust for factors such as calculation methodology, technology, quantity or baseline which are factors that do not need to be supported by metered data. Non-ops sites do not include operational adjustments.

Steam Trap: Steam trap sites are sites in which steam traps are the energy efficiency measure. This typically involves the repair or replacement of failed or faulty steam traps. In PY2020, steam traps sites were evaluated similar to desk reviews using a calibrated steam trap tool.

KEY FINDINGS

Non-steam trap sites were evaluated using a combination of operational and non-operational adjustments. The eight sites evaluated in 2020 included 4 steam trap sites, 3 non-operational adjustment sites, and 1 operational adjustment site.



RECOMMENDATIONS

- RI Energy should assess whether to implement the new MA steam trap study results or determine an alternate approach to vetting RI steam trap sites which may include developing an independent steam trap calculator in RI.
- Consider evaluating only non-steam trap sites in the next evaluation (PY2021) without changing the program's precision targets (80/20) as the new calibrated steam trap tool is still being developed.
- DNV recommends that the project implementor conduct a quality check at project closure to screen for tracking, administrative, or methodological errors and correct them before entering final reported savings in the tracking system.

Installed measures

- Pipe insulation
- Process equipment
- HVAC equipment
- Steam traps
- Duct insulation
- Airflow reduction and more